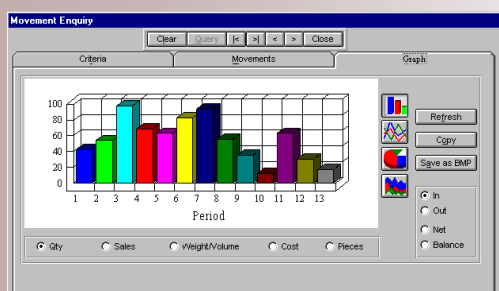


Inventory Management System



Item Cards

Clear Query < > New Update Delete Report Copy Close

Item Id: 12600 Description: Rayban Sunglasses - Aviator

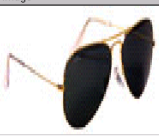
Class: Stock Active Obsolete

Categories Interface Settings General UOM Qty / Value

ReOrder Counters User Fields Notes Prices Define Sets

Notes

Frame: Metal
 Lens: Gray
 Wrap: Gbase
 Spring Hinges: No
 Nose Pads: PVC
 Eye Size: 58 mm
 DBL: 14 mm
 Temple Length: 135mm

Image:  Browse

C:\My Documents\Aviator.bmp

SERVICE IS OUR PRIORITY

Nicosia Office:

117, Strovolos Avenue,
 3rd Floor, Office 301
 2042 Nicosia,
 P.O. Box 28370, 2093 Nicosia,
 Cyprus
 Tel: + 357 22 470 000
 Fax: + 357 22 470 100

Larnaca Office:

Salt Lake Court
 Yiangou Souroulla Str,
 2nd Floor, Office 204,
 CY-6037 Larnaca,
 Cyprus
 Tel: +357 22 470 000
 Fax: +357 22 470 102

Limassol Office:

Megaro Anna,
 238 Ayias Phylaxeos,
 2nd Floor, Office 201
 CY-3083 Limassol,
 Cyprus
 Tel: + 357 22 470 000
 Fax: + 357 22 470 101

Greece Office:

46, Akti Moutsopoulou,
 Ground Floor, Office 102,
 185 36, Piraeus,
 Greece
 Tel: + 30 211 4046686
 Fax: + 30 211 4046686

cycOm
 business solutions ltd

INVENTORY MANAGEMENT SYSTEM

PRODUCT DOCUMENTATION

Overview

The Inventory Management System is based on Oracle relational database technology and an Open Systems Architecture that allows users to organize and adapt the system to meet their specific requirements. The System is a comprehensive System covering and supporting organizational warehouse needs throughout the entire warehouse management cycle. It provides all the functionality needed to comprehensively control items in warehouses. This includes planning and costing information, inventory valuation and stock status information. It performs all aspects of inventory tracking and reporting.

Features

Flexible

The Inventory Management System offers unrestricted flexibility by allowing you to customize the system according your warehouse Business Processes. You may define multiple transaction definitions that govern how the different warehouse documents will behave depending on your organizational needs.

Simple to Use

The System incorporates internationally accepted graphical elements, according to the Microsoft Windows standard, delivering a familiar "look and feel". This minimizes training time and allows users familiar with the Microsoft Windows interface to get "up and running" soon after the system is installed. The standard Windows on-line help gives you instant reference information, eliminating the need to refer to printed manuals.

Customized Reporting

Reports can be generated as and when required. Flexible report selection criteria allow you to restrict the information to be printed and the way that these will be sorted. Using the preview windows, reports can be viewed on the screen before being sent to the printer. The Crystal Report Writer allows your expert user to design any custom report from the database without programming.

Ad-Hoc Queries

Enter your search in the empty text boxes of a form and press the query button to have the system select all the information matching the criteria entered. Use the "Refresh" button on the enquiry forms to refresh the data on screen. View the results of the enquiry in a tabular form. Double click on any of the Inventory transactions listed to the navigate to the source entry document.

Integrated

The Inventory Management System is fully integrated with the Financial Management System, as well as the Address Management Systems both in terms of their visual interface as well as their underlying mechanics and database. All related systems are updated concurrently and no special or lengthy procedures need to be executed periodically. An inventory document updates both the Inventory and Financial Management Systems. Additionally, you may define multiple Interface definitions with the Financial Management System and thus capture as much information as required in the Financial Management System in terms of Journals, Accounts and Transaction Analysis.

Email Enabled

All reports can be forwarded to any recipient or group connected to the electronic mail system after being previewed on the screen.

Multicurrency

The System holds stock movements in and out of the warehouse in base currency but it can accept and record purchases and sales made in foreign currency too.

Cycom Business Solutions Ltd provides powerful software solutions for today's demanding and competitive business environment.

Their easy-to-use graphical user interface increases user productivity and enables business workgroups to manage financial information more effectively.

FLEXIBLE

SIMPLE TO USE

CUSTOMIZED REPORTING

AD-HOC QUERIES

FULLY INTERGRATED

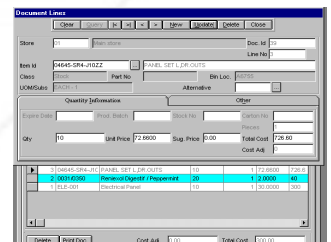
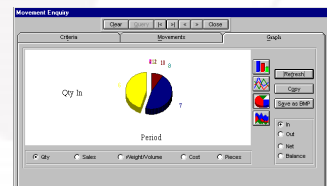
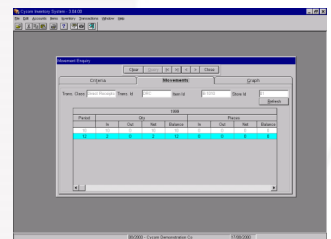
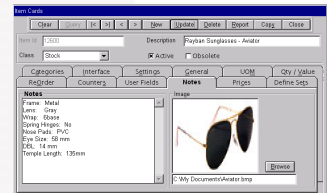
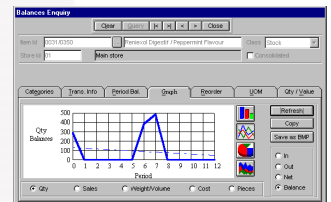
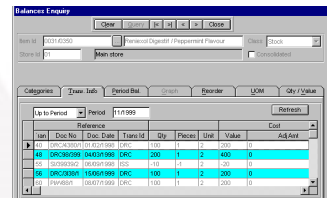
EMAIL ENABLED

MULTI-CURRENCY

FLEXIBLE DOCUMENT ANALYSIS

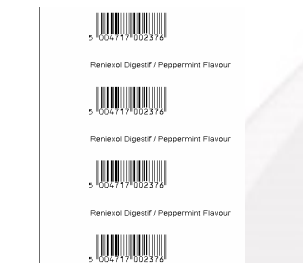
SECURE ROLE-BASED ACCESS CONTROL

MULTI-COMPANY



ABC Analysis Report (Based on Contribution)

Item No.	Description	Units	Value	Cost	Margin	ABC	XYZ	Days	Turn
10001	Peppermint Flavour	1000	10000	5000	50%	A	X	10	100
10002	Peppermint Flavour	2000	20000	10000	50%	B	X	20	200
10003	Peppermint Flavour	3000	30000	15000	50%	C	X	30	300
10004	Peppermint Flavour	4000	40000	20000	50%	A	Y	40	400
10005	Peppermint Flavour	5000	50000	25000	50%	B	Y	50	500
10006	Peppermint Flavour	6000	60000	30000	50%	C	Y	60	600
10007	Peppermint Flavour	7000	70000	35000	50%	A	Z	70	700
10008	Peppermint Flavour	8000	80000	40000	50%	B	Z	80	800
10009	Peppermint Flavour	9000	90000	45000	50%	C	Z	90	900
10010	Peppermint Flavour	10000	100000	50000	50%	A	Z	100	1000



Expiry Dates Report

Options: Analyze

Expiry Details

From	To	Expiry Date	Trans Date	Stock No.	Carton No.	Production Batch

Item Category

From	To	Type	Categ	Group	Status

Inventory Reports

General: Report: Inventory Control, Period: Fiscal, Period/View: F101 200

Store Class: 1, 2, 3, 4, 5

Sort Level: 1, 2, 3, 4, 5

Options: Include Items With Zero Qty, Print Other Description, Include Items With Zero Movement, Print Current Allocated Qty

Requirements Report

General: Report: Inventory Forecast, All of Period: 11/2002

Range Of Periods To Consider: 11/2002 To: 11/2002

Number Of Periods To Replenish: 01, Include Periods With No Stock

Sort Level: 1, 2, 3, 4, 5

Options: Round-up Replenish Qty to the Order Qty

Reports can be previewed on the screen and can be printed on any printer installed on your Windows System. The reports viewer allows you to export reports to a variety of popular formats such as Excel, Lotus, Word, Acrobat etc, or to send the report through electronic mail.

Secure Role-Based Access Control

Your system administrator can assign each user to a role-based group. To each group the administrator can assign the functions that are to be accessible to all users of that group. For example one group could have access to the account enquiry and document entry functions but could be restricted from accessing the batch posting function. By restricting the functions available to particular users, you can reduce the potential for a security problem.

Standard Reports

A rich set of standard reports is available to help you monitor your business operations. These can be previewed on the screen or exported to a variety of popular formats like:

Excel, Lotus, Word, Acrobat etc, or to send the report through electronic mail.

Reports are produced on demand based on user selected criteria, and can be printed for any accounting period.

Chart of Accounts

List of accounts which have been defined in the Financial Management System.

Address Records

Mailing Labels, Telephone Directories, Address Records Listing.

Items Listing

Lists all the items defined in analytical or summarized format.

Bar Codes Printing

Ability to print Bar Codes for a specific item or items that were entered on a specific document.

Item/Store Information

Lists the information of the range of items in the specific store, such as in location, re-order quantity, re-order level, average cost etc.

Slow Moving Items

Lists the items that are slow moving based on their turnover ratio or last movement date. The report offers the ability of user defined grouping levels.

Expiry Dates Report

Shows Items that have expired based on the expiry date entered for a given batch during its purchase. The marketing period of the item may also be considered during the production of the report.

Transaction Details

Lists the transactions of the item for a range of periods, stores etc. This report shows all types of transactions regardless of the system that processed them. (i.e. Inventory, Sales or Purchases).

ABC Analysis

Classifies items in descending order according to their contribution to revenue or stock investment value.

Inventory Reports

These reports include Inventory Control, Inventory Valuation and Store Balances that can be produced in summarized or analytical format. The groupings of the report are user defined and they can be grouped by five parameters which may be one of the following: Store, the user defined item categories, the user defined balance analysis, Main Supplier, Item Short name, Superseded by, and Consolidation Item.

Inventory Control—shows the opening balance, issues and sales, purchases, transfers, adjustments and closing balance in analytical or summarized format for the following figures: quantity, cost, sales, pieces and weight and volume.

Inventory Valuation—shows in analytical or summarized format on hand quantity and value, average cost, pieces and weight/volume.

Store Balances—shows the Balance of each store in horizontal format for any of the following figures: quantity, cost, pieces and weight/volume.

Requirements Reports

These reports include the Reorder Level Report and the Inventory Forecast Report. The groupings of the report are user defined and they can be grouped by five parameters which may be one of the following: Store, the user defined item categories, the user defined balance analysis, Main Supplier, Item Short name, Superseded by, and Consolidation Item.

Reorder Level Report—shows all items whose quantity has fallen below the re-order level.

Inventory Forecast Report—shows the quantity that will be needed by forecasting sales based on sales of previous and the number of periods to replenish, specified by the user.

Stock Take Reports

These reports include the Input Sheet and the Variance Report. The groupings of the report are user defined and they can be grouped by five parameters which may be one of the following: Store, the user defined item categories, the user defined balance analysis, main Supplier, Item Short name, Superseded by, Consolidation Item and Bin Location.

Input Sheet—Is the report that will be used by the warehouse personnel for recording the physical stock taking.

Variance Report—Shows the differences between the physical stock take and the warehouse quantity balance.

Custom Reports

Using this option the user can create customized reports that are based on pre-defined columns and call them from the system menu. These columns are pre-calculated by the system during the "Generate" option.

Document Listings

You may print any of the Inventory Documents in a form, analytical listing and summary listing formats.

Key—Features

- ◆ **Fully Intergraded**—with the Financial Management System as well as Address Management System.
- ◆ **All warehouse functions supported**—including Direct Receipts, Return Receipts, Issues, Returns, Transfers, Adjustments and Physical Stock Take utilities.
- ◆ **Extensive Document Entry validations**—such as restricted on hand quantity validations, serial number validation for serialized products, Expiry Date and Batch validations, blocks inactive items from being used on documents.
- ◆ **Extensive enquiry capabilities**—are available with main focus on Balances with reference to Items, stores and transaction classes.
- ◆ **User defined Allocations scheme**—is available where you may set what unposted transactions in the Inventory System you would like to consider as allocated. The selection includes the following: Purchase Orders, Purchase Deliveries, Entered Purchase Invoices and Returns, Entered Ex-Bond Transactions, Entered Issues and Returns, Entered Direct Receipts and Return Receipts, Entered Adjustments, Entered Transfers, Sales Orders, Sales Delivery Notes and Returns, Entered Sales Invoices and Returns as well as Point of Sales.
- ◆ **Five User Defined Document Analysis, Item Categories and Balance Analysis**—are available for further analysis of documents and Items and Stock Balances. Interfaces with the Financial Management System may be set up so that these may be further analyzed in the General Ledger.
- ◆ **Batch or on-line posting**—Documents may be posted on-line, one by one or in a batch according to user selected criteria.
- ◆ **User defined transaction definitions**—allow you to adapt each document entry function to your organization's requirements. The system may be set so that for each transaction definition a different numbering sequence is generated for easier filing and audit trail.
- ◆ **Documents Copy facility**—Enables the copying of an existing document into a new document that helps in reversing entries. (i.e Create a Direct Receipt document into a Return Receipt document).
- ◆ **Physical Stock Tacking**—The count of the stock take can be entered into the system manually or via hand held devices that produce ASCII files that can be imported into the system. A variance report can also be produced showing the differences in stock.
- ◆ **Import/Export Documents**—Enables the import/export of inventory documents from/to ASCII files.
- ◆ **Automatic Generation Wizards**—assist you in generating Adjustment documents as a result of a physical stock take.
- ◆ **A number of store types are supported**—including Normal, Bonded Warehouses and Duty Free shops.
- ◆ **Flexible Interface to the Financial Management System**—Different parameters regarding Journals, Accounts and Transaction Analysis may be set for each Transaction Type and Interface Group allowing further analysis in the General Ledger.
- ◆ **Support for Serialized Items with traceability**—from Purchase Invoices to the Inventory System and the Sales Order Processing System.
- ◆ **Production Batches and Expiry Dates**—may be traced from the Purchase Invoice to the Inventory System and the Sales Order Processing System.
- ◆ **Multiple References to Item Codes**—gives the ability to reference Item codes in the documents entry by one of the following ways: Item Id, Part Number, Bar Code, Short Name, and Supersession Code.
- ◆ **Multiple Item Classes**—may be used such as Stock, Non-Stock and Text may be used in documents each handled in a different way by the Inventory System.
- ◆ **Multiple Units of Measure**—may be defined for each Item for Sales, Purchases and Stock Keeping.
- ◆ **Weight Volume**—may be defined in all documents in addition to quantity for each Item. For example you may define 6 cans of soft drinks to be 1.9 litres. The weight/volume information may be later viewed in a number of Inventory Reports.
- ◆ **Pieces and Factors**—may defined during Item entry in documents and the system will calculate the quantity for you. For example 3 blocks of wood with 180cm length and 120cm width will approximately make 0.12 cubic meters as quantity.
- ◆ **Set Items**—defined as an Item composed of other Items may be handled by the system in a number of methods. For example a living room set may be composed of 1 sofa, 1 main table, 2 side tables and 2 armchairs. Users may only have to define the set item in a document and the components will be handled automatically by the system.
- ◆ **Items Audit Trail**—the system keeps track of changes on the item card.
- ◆ **List of Values**—the pop-up list of values allows you to easily find accounts and other codes.
- ◆ **Flexible transaction retention methods**—transaction history for each item can be held for as long as required.
- ◆ **Future/Past Postings**—can be made to any future or past period but can also be restricted by the system administrator within pre-specified open periods.
- ◆ **User defined fields**—20 user-defined fields for each item allow you to customize the system so that it is relevant to your business needs.
- ◆ **Multi-company processing**—is allowed since a three-character code is used to identify each company, allowing you to hold many companies in the same database.



Nicosia Office:
 117, Strovolos Avenue,
 3rd Floor, Office 301
 2042 Nicosia,
 P.O. Box 28370, 2093 Nicosia,
 Cyprus
 Tel: + 357 22 470 000
 Fax: + 357 22 470 100

Website: www.cycom.com.cy
 Email: info@cycom.com.cy